



CONN RIVER NORTH

PROPOSED ECOLOGICAL RESERVE

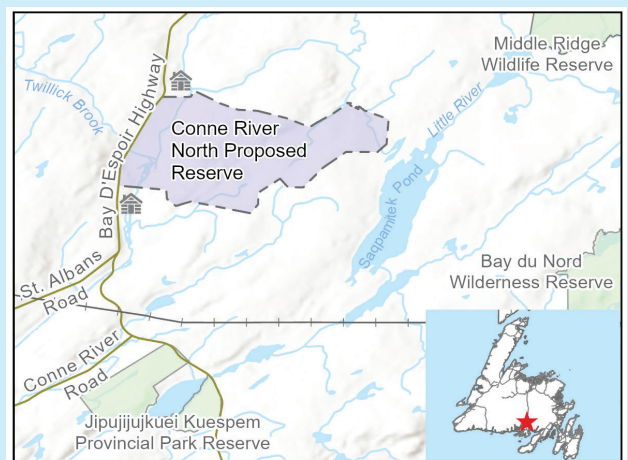
PROTECTING FORESTS, WETLANDS, AND MI'KMAQ HERITAGE

The Wilderness and Ecological Reserves Advisory Council (WERAC) and the Government of Newfoundland and Labrador (Department of Environment and Climate Change) are seeking public input on two proposed ecological reserves: Conne River North and Facheaux Bay.

SITE HIGHLIGHTS

Conne River North: Forests, wetlands, and rivers vital for wildlife and heritage.

- **Landscape Type:** Central Newfoundland Forest (Twillick Steady Natural Region).
- **Draft Boundary:** The initial draft boundary was proposed in 2020. Miawpukek First Nation has suggested potentially expanding this area to include a significant Mi'kmaq cultural site and protect cultural keystone species.



WHAT CAN WE PROTECT TOGETHER?

- Landscapes, rivers, and wetlands.
- Caribou, moose, salmon, and other wildlife.
- Sustainable hunting, angling, berry picking, and firewood cutting, activities deeply rooted in local and Mi'kmaq traditions.
- Local access and recreation (including cabins and snowmobiling), ensuring continued connection to the land.
- Water quality for communities, wildlife, and aquaculture.
- Cultural, historical, and family locations, encompassing Mi'kmaq heritage and local community identity.
- Unique lichens, and plants.

WHAT DO WE WANT TO MANAGE TOGETHER?

- Industrial development: forestry, mining, and windmills.
- Unplanned new buildings and cabins.
- Off-trail ATV use, except for traditional subsistence activities.

HOW WILL THIS PROCESS WORK?

We are committed to working closely with Indigenous governments, municipalities, businesses, and organizations to design protected areas that reflect local priorities.

1. Gather input through conversations, surveys, open houses, and meetings.

2. Refine boundaries and plans based on what we hear.
3. Make recommendations to the provincial government about temporary protection.
4. Organize further engagement to finalize boundaries and develop a management plan.
5. Present final recommendations and a management plan for government approval.

KEY POINTS

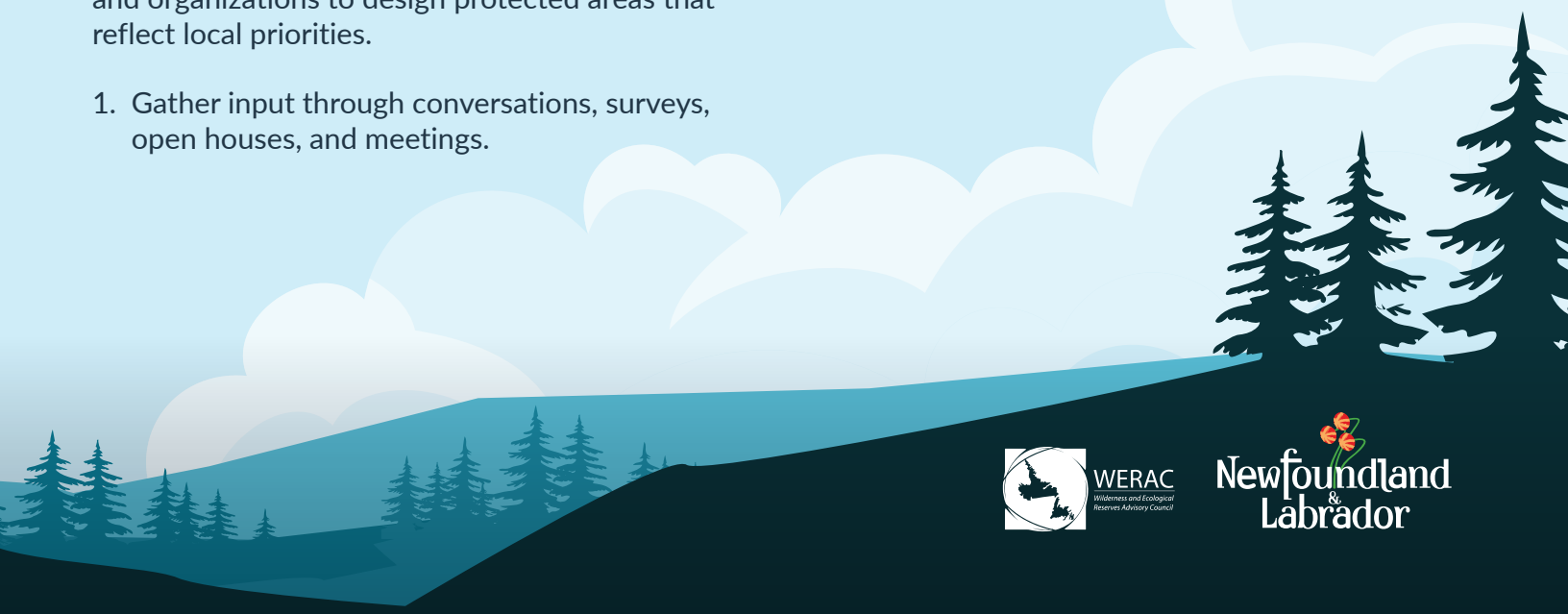
- Proposed boundaries and management approach will evolve with public input.
- There are multiple opportunities for public consultations, both in-person and online, at key stages of the process.
- These reserves are designed to protect nature and maintain local traditions.
- Changes to management plans or boundaries require public consultations under provincial law. This ensures that local communities always have a voice in what happens in a protected area.

Questions? Contact us:

Call Erika, Natural Areas Planner, at 709.636.4836

Email werac@gov.nl.ca

Visit engageNL.ca



WERAC
Wilderness and Ecological
Reserves Advisory Council

Newfoundland
&
Labrador